

LISTENING

SECTION 1

Questions 1 - 5

Complete the notes below.

Write NO MORE THAN ONE WORD AND/OR A NUMBER for each answer.

Second-hand Bedroom Furniture for Sale

Example	Answer
Number of items for sale:	three

• Bedside Table

- Construction wood
- Colour **1**.....
- Drawers two (in each table)
- Handles made of **2**.....
- Height **3**.....cm
- Condition **4**.....
- Price **5**(for both)

Questions 6-10

Complete the notes below.

Write NO MORE THAN ONE WORD AND/OR A NUMBER for each answer.

• Dressing Table

- Drawers five (two are **6**.....)
- Width **7**.....
- Mirrors three: one large, two small (all **8**.....)

- Condition good
- Price **9**.....
- Price **5**(for both)

• Sellers Details

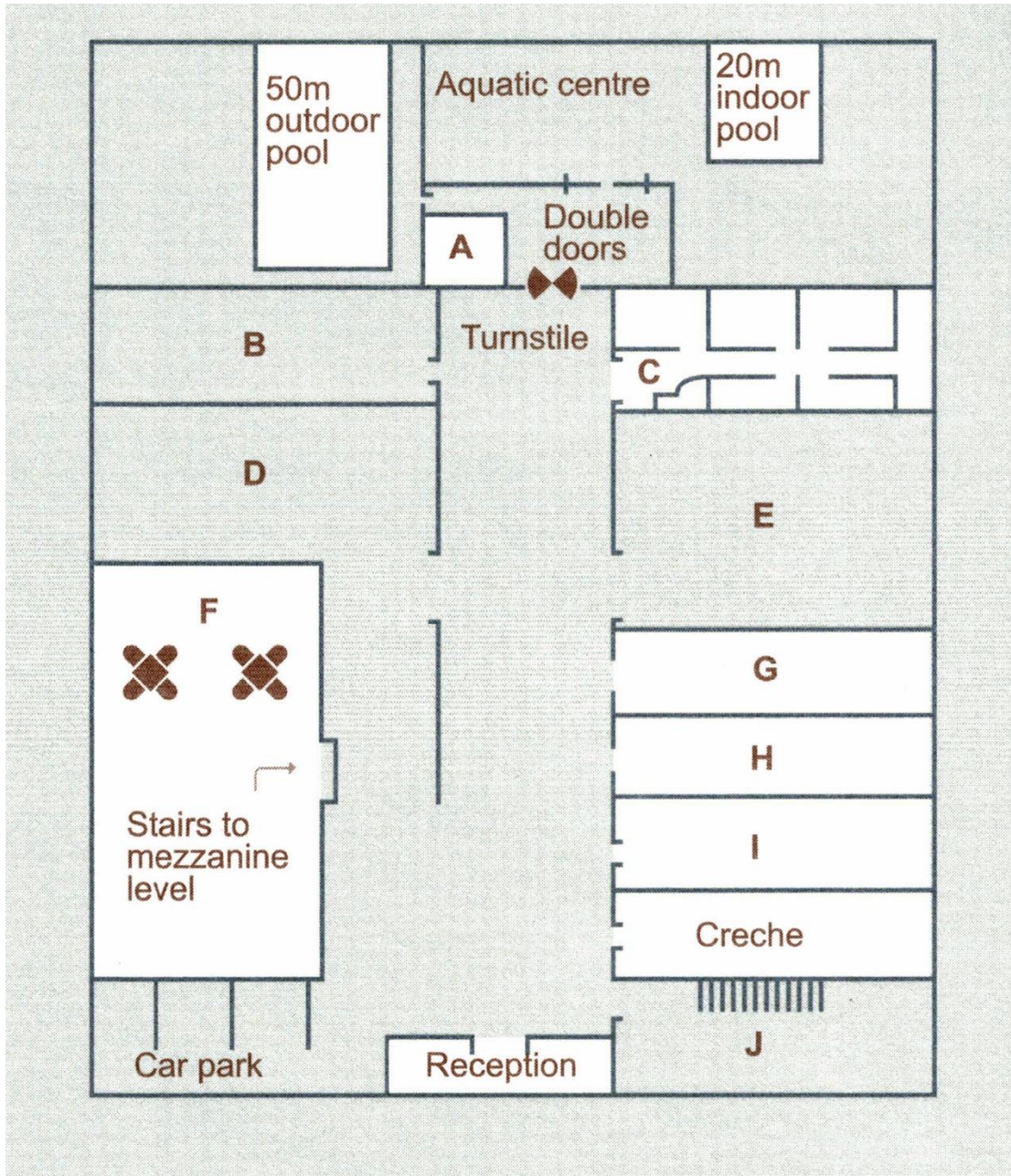
- Name Carolyn Kline
- Address **10** 19Road

SECTION 2

Questions 11 - 17

Label the plan below.

Write the correct letter, **A - J**, next to the location mentioned in questions 11 -17



- | | |
|----------------------------|-------|
| 11. Administration office | |
| 12. Sports medicine clinic | |
| 13. Bike racks | |
| 14. Café | |
| 15. Conference room | |
| 16. Men's locker room | |
| 17. Pool shop | |

Question 18

Choose the correct letter, **A**, **B** or **C**.

- The sports centre is open on public holidays from
 - A.** 07:00 am. to 05:00 p.m.
 - B.** 05:00 a.m. to 07:00 p.m.
 - C.** 05:00 am, to 09:00 p.m.

Questions 19 -20

Choose TWO letters, **A - E**.

- Which TWO services are covered by the membership fee?
 - A.** Personal training
 - B.** Swim squads
 - C.** Child-minding
 - D.** Programme design
 - E.** Tennis lessons

SECTION 3

Questions 21 - 25

Complete the notes below.

Write **NO MORE THAN TWO WORDS** for each answer

Part One- Checklist:

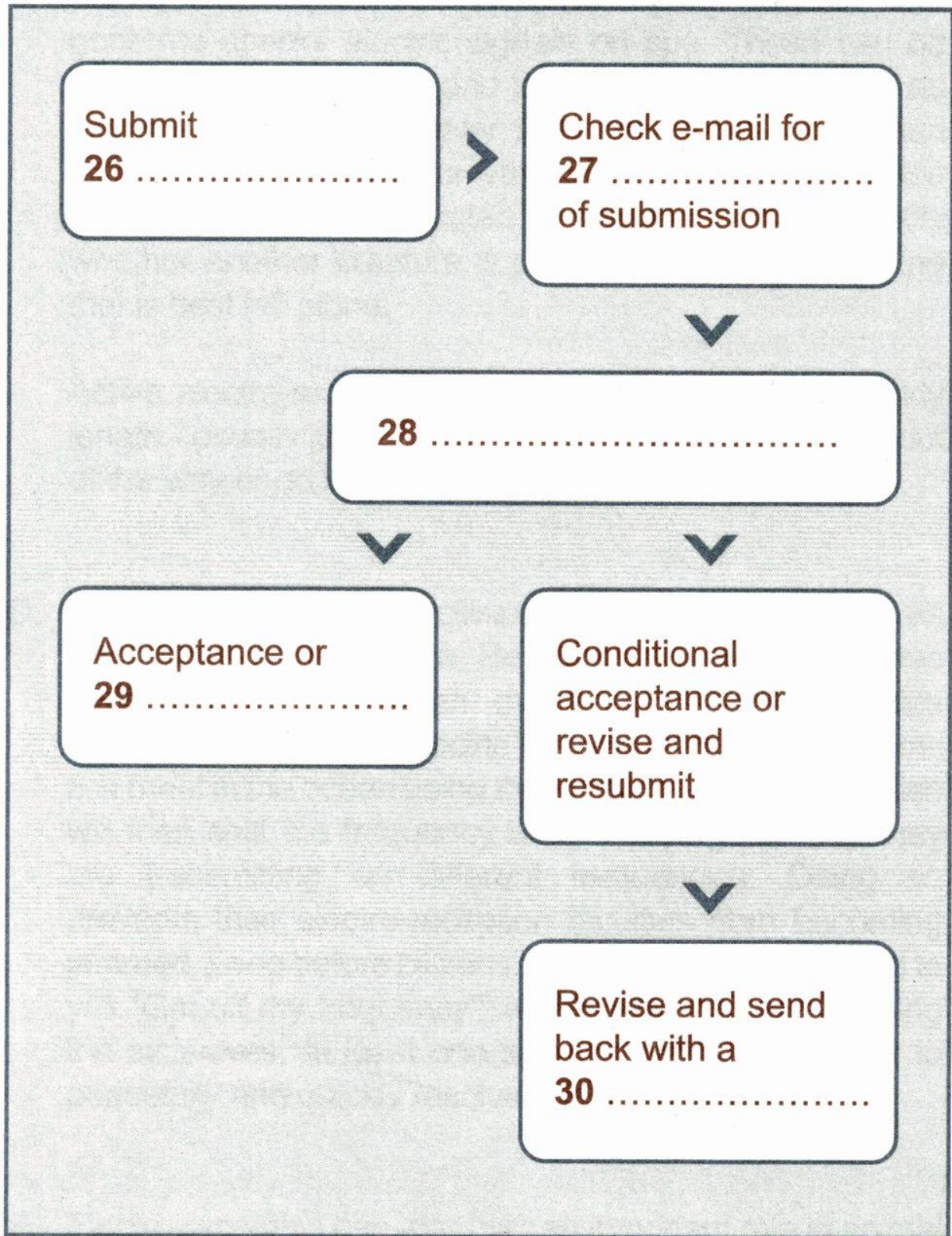
- Write an **21**- keep it brief.
- List relevant **22**
- Have two academic advisors read over your **23**.....
- Choose the journal you want to submit to.
- Apply the journal's **24**to your article.
- Sign the **25**

Questions 26 - 30

Complete the flow-chart below.

Write **NO MORE THAN TWO WORDS** for each answer

Part Two- Process:



SECTION 4

Questions 31 - 33

Complete the notes below.

Write NO MORE THAN TWO WORDS AND/OR A NUMBER for each answer.

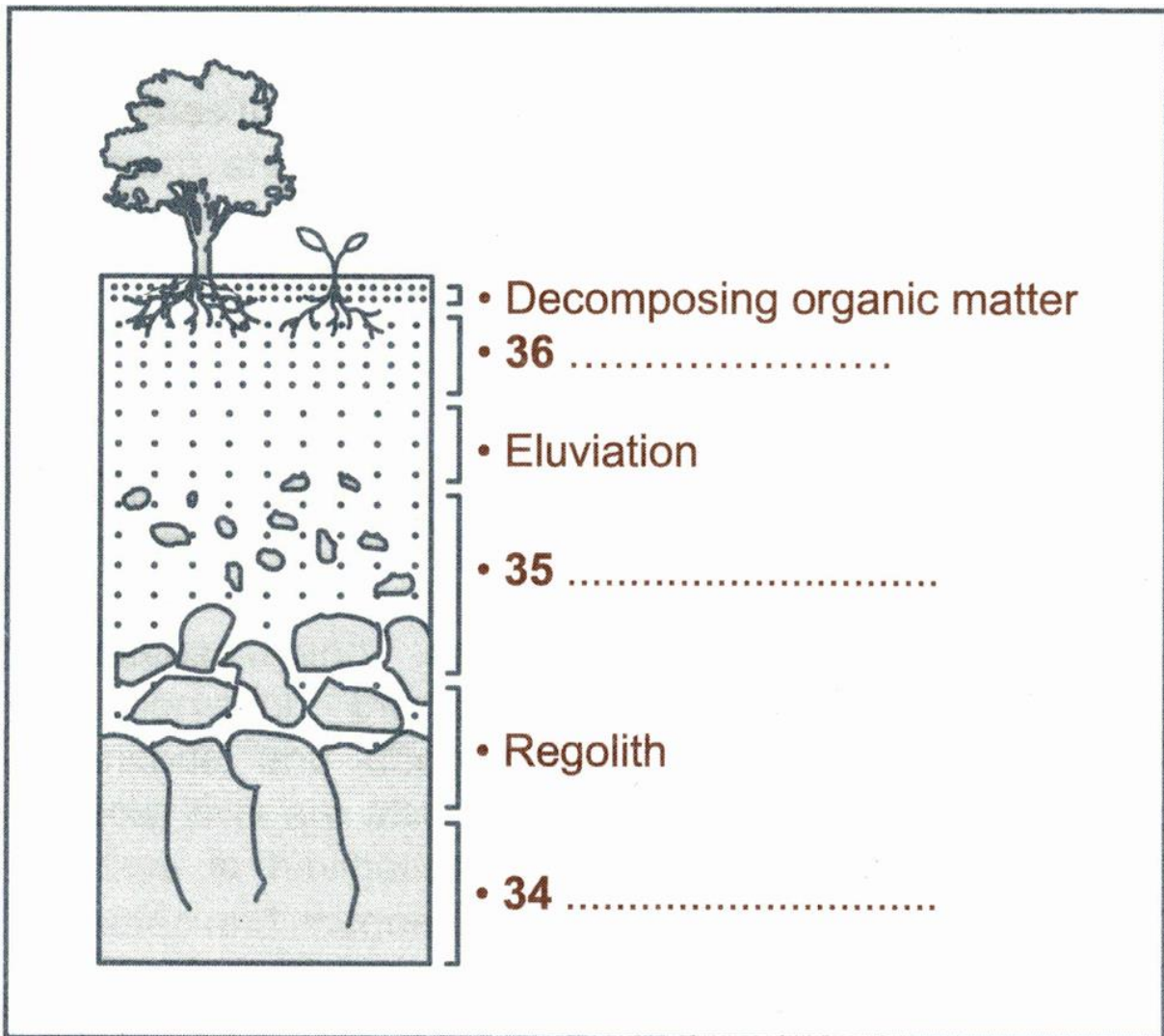
If soil is healthy, it is a **31**teeming with life such as worms, fungi and bacteria. If plants are grown in poor soil, they will lack **32**and human health will suffer. Plants are nourished by organic matter, **33**and other essential elements which are broken down by insects and other organisms in a synergistic relationship.

Questions 34 - 36

Label the diagram below.

Write NO MORE THAN TWO WORDS for each answer.

Layers of Soil



Questions 37 - 40

Complete the notes below.

Write NO MORE THAN TWO WORDS for each answer.

Problems:

- Erosion
- **37**from various sources including chemical fertilizers

Farming Methods

Conventional	Organic
<ul style="list-style-type: none">• monoculture• synthetic fertiliser and chemicals used for 38• Genetically- modified seeds• Pesticide and fungicide sprayed on crops after picking• No need for documentation of 39	<ul style="list-style-type: none">• crop rotation• Covering crops• Use of insects as natural 40• Addition of manure and green waste